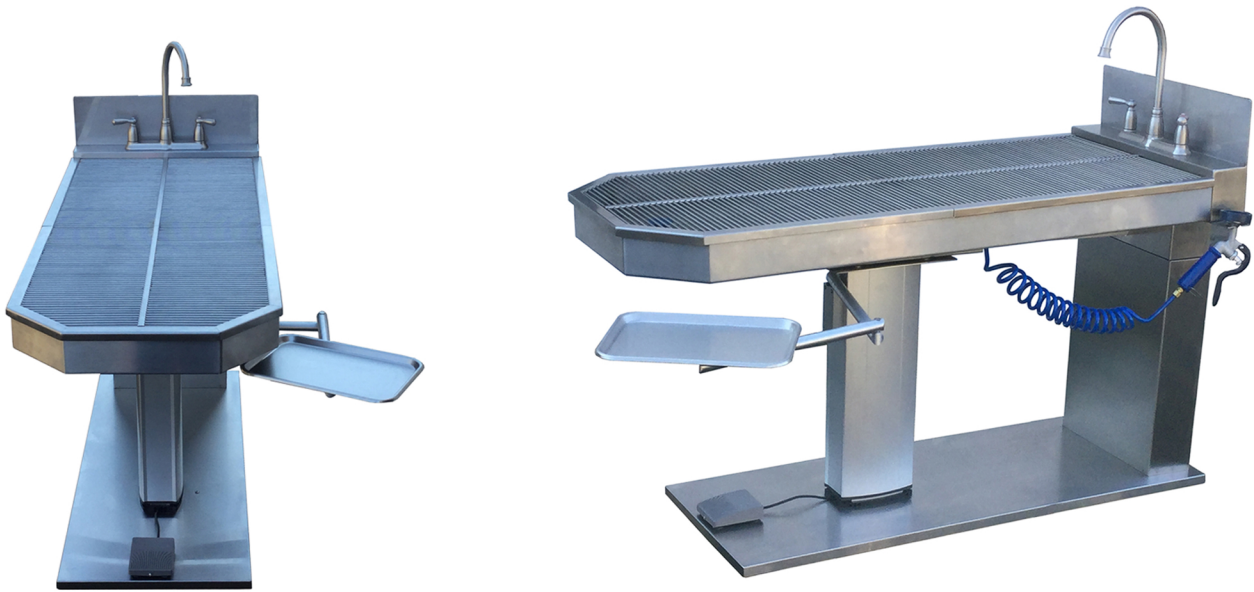


## Dental Focus® Wet Lift Table

The Dental Focus® Wet Lift Table is a perfect option for all your dental and treatment table needs. Featuring a full sink, spray hose and instrument tray. A sloping sink makes for easy cleaning and draining system designed to work at any height.



### *Features:*

- Pedal controlled height adjustment
- Attached instrument stand tucks underneath table for discrete storage
- Split grate for easy removal and cleaning
- Sloping sink for efficient draining
- Hair trap prevents debris from clogging the drain
- Convenient spray hose reaches across table length and stores discreetly
- Cut corners for accessibility

### *Specifications:*

- Width 22 ¾”
- Length 56 ½”
- Height Range 31-46 ¾”