

I AM POWERFUL

PIEZOTOME

CUBE

**LESS TRAUMA,
LESS DRAMA**



**DENTAL
FOCUS**
UC™

jmerritt@dentalfocus.biz | (908) 968-3553 |
www.dentalfocus.biz

PIEZOTOME

CUBE

"The cube has established a new paradigm in the delivery of Veterinary Dental procedures. The piezoelectric technology reduces surgery time, intra and post operative trauma by precise preservation of unaffected tissues. With innovative application the technology will become a preeminent player in Veterinary dentistry." -Dr. Thoulton Surgeon, DVM, FAVD, DiplAVDC





EXPAND YOUR EXPERTISE

PRE operative

CHOOSE THE BEST

Surgeons and patients agree on the clinical benefits of ultrasonic bone surgery. **PIEZOTOME®** is the the most globally trusted brand to perform delicate bone surgeries¹.

INTRA operative

IMPACTFUL TREATMENTS

PIEZOTOME® Cube's unmatched performance combined with the practitioner's clinical expertise paves the way for accurate, faster and atraumatic surgical procedures.

POST operative

PATIENT FRIENDLY

Improving patient care is our priority. **PIEZOTOME®** surgery exceeds traditional instruments with faster healing², significantly less swelling, pain and complication after surgery.

Piezotome® Cube: When compromise is not an option.

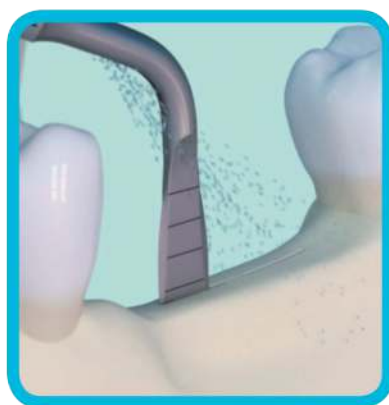
CLINICAL BENEFITS AT EACH STAGE

INTRA-OPERATIVE



SAFETY

- Cutting selectivity: soft tissue is preserved (nerves, membranes and arteries)
- Intraosseous temperature is under control



PRECISION

- Fine and consistent cut on all types of bone
- Minimal bone loss for less invasive procedure



COMFORT

- New automatic power control for smooth and effortless cut
- Easy bone access with exclusive tips designs

« *PIEZOTOME® surgery is superior in atraumaticity and soft-tissue safety (...) No lesions of the mandible nerve were detected with Piezotome® surgery.* »

« *THE PIEZOTOME® produced the smallest increase in intraosseous temperature.* »

CLINICAL BENEFITS AT EACH STAGE



VISIBILITY

- Consistent irrigation flow
- Cavitation: microbubbles releasing oxygen has a hemostatic effect

POST-OPERATIVE



SUPERIOR OUTCOMES

- Reduced pain
- Less analgesics
- Limited edema

GREAT HEALING

- Predictable
- Fast recovery
- Bone densification

« 86% of the patients were observed with no postsurgical swelling and 87% had no postsurgical pain.⁵ »

« The healing at the clinical level is much more predictable and much less painful. The amount of demineralization created (...) minimizing trauma, discomfort, and enhancing patient's acceptance.⁶ »

POWER WHEN YOU NEED IT MOST

POWERFUL AND SMART



Dynamic Power System Inside
**POWER INTUITIVELY ADAPTED
FOR MAXIMUM EFFICIENCY & SAFETY**

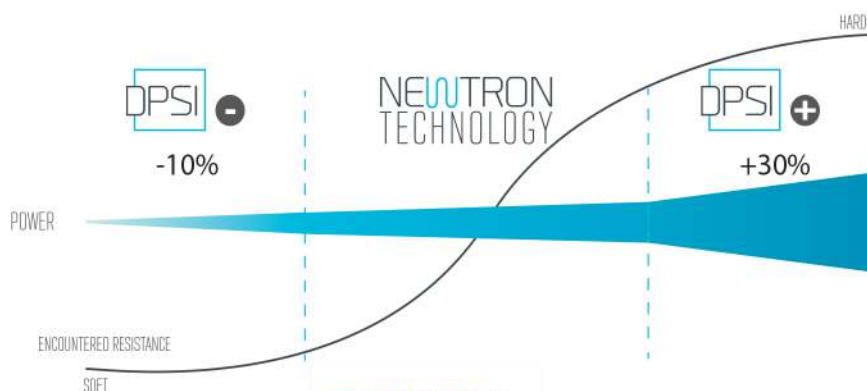
According to the resistance encountered, the **D.P.S.I.** smart assistance will:

Increase the power **+30%** improving cutting performance

Decrease the power **-10%** to be even safer on soft tissues

WITH THE D.P.S.I., GET

- The most power for the fastest cutting on the market
- Tip will not get “bogged” down or stop in deep cuts or dense bone
- Immediate power responsiveness
- Special starting boost for a smooth and effortless cut



**DENTAL
FOCUS**

jmerritt@dentalfocus.biz | (908) 968-3553 | www.dentalfocus.biz



STYLISH

- Touch screen for easy control of major settings
- Compact unit
- Perfect asepsis

EXTRACTIONS



EXTRACTIONS WITH IMMEDIATE IMPLANT PLACEMENT

Extractions can sometimes be difficult. With **PIEZOTOME® Cube**, Make them simple and less traumatic:

- Preserve more bone
- Faster healing
- Less post-operative swelling
- Like a “powered periosteal”

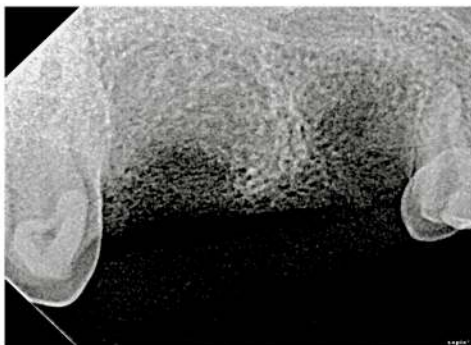


EXTRACTION

Syndesmotomy

For maximum bone preservation

Ref. F87546



- Reduce the risk of buccal plate fracture and other complications
- Increase bone preservation and extraction procedure predictability
- Tips follow the contour of teeth and bone

EXTRACTIONS

1. Choose the appropriate tip according to the tooth location or root section



6 TIPS FOR
VIRTUALLY ANY
TOOTH IN ANY
PATIENT

2. Activate the tip before its insertion. Use an up and down motion to help cool down the end of the tip*

*very important!



3. Gently move around the tooth until complete avulsion and extract the root in one piece

