

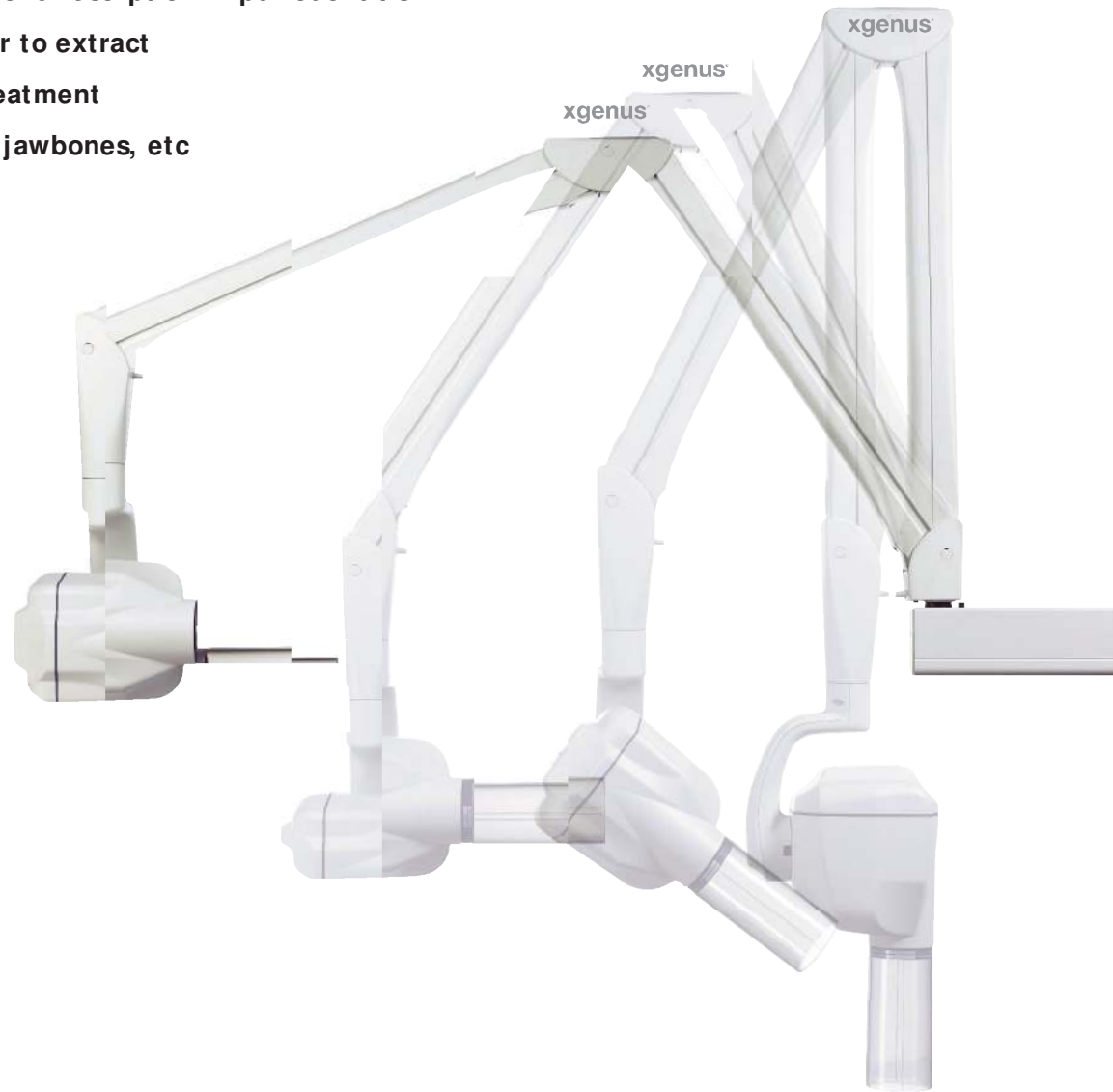
xgenus®

Taking dental X-rays is essential in veterinary dentistry for:

- diagnosing root resorption
- diagnosing an apical abscess on a broken tooth
- evaluating the extent of bone resorption in periodontitis
- making a decision whether to extract
- carrying out root canal treatment
- diagnosing a tumor of the jawbones, etc

XGENUS (AC)

Generator low frequency (50Hz)
 Minimum exposure time 0.08 seconds
 Voltage 70kV
 Intensity 8mA



xgenus®dc

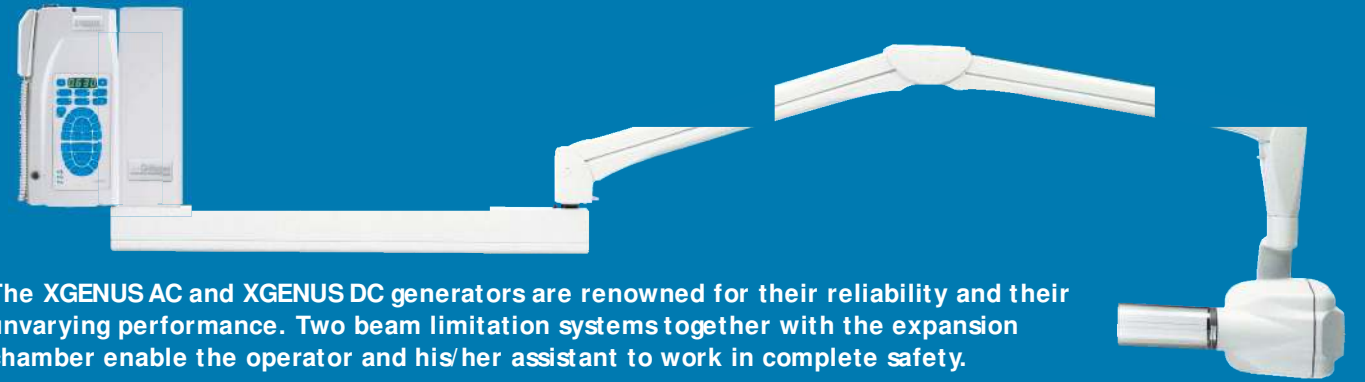
XGENUS (DC)

High-frequency generator (200Hz) constant voltage
 Minimum exposure time 0.02 seconds
 Reduction of exposure time 35% compared with X-Mind AC
 Voltage 70kV or 60kV
 Intensity 4mA or 8mA
 Reduction of radiation dose 80% with a digital sensor



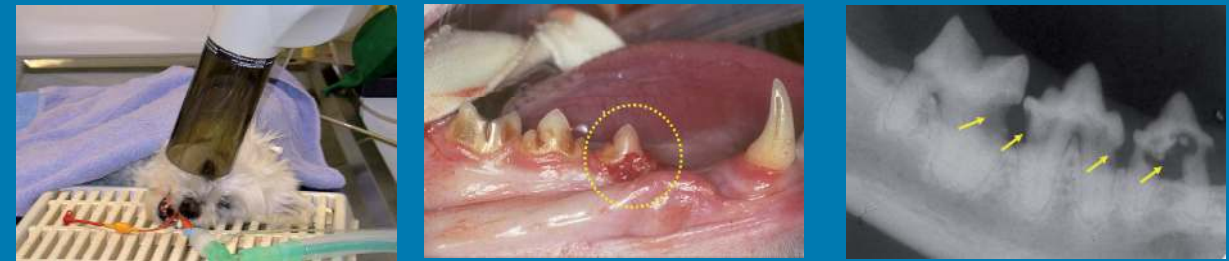
Available as a mobile unit!

Reliability of the XGENUS AC and DC generators...



The XGENUS AC and XGENUS DC generators are renowned for their reliability and their unvarying performance. Two beam limitation systems together with the expansion chamber enable the operator and his/her assistant to work in complete safety.

Facts and Figures...



Dental X-rays enable lesions that are not clinically visible to be detected in 42% of cats and 28% of dogs (Verstraete, 1998)

When a cat has a missing tooth, an X-ray will reveal there are still root fragments present in 75% of cases [Lommer et al. JVMA 2001].

Programmable user-defined timer



With the XGENUS timer, the micro-processor controlled exposure times are user-defined and programmable.

The timer is compatible with digital imaging systems and can control two AC and/or DC generators alternatively.

Available as a mobile unit!



sopro
imaging
Vet



- Very high quality plates
- Two XGENUS AC and/or XGENUS DC generators can be controlled by a single timer
- Rotation at 395° around the vertical axis
- Better protection thanks to a high focus-to-skin distance
- Programmable timer