



**UBiled**

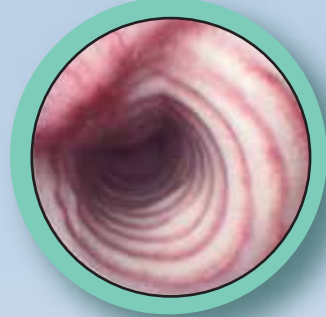
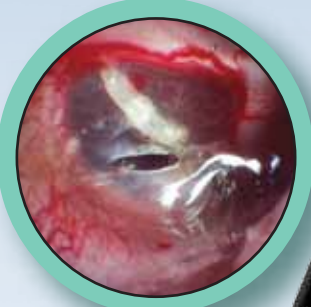


**Smart and User-Friendly**

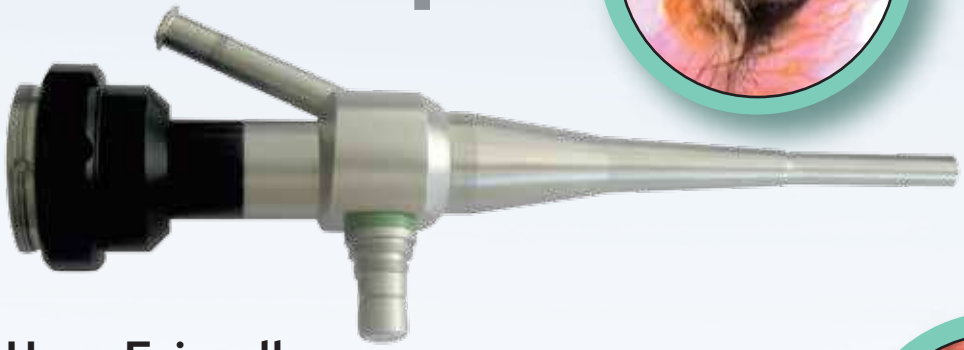
- All-In-One USB2 camera aids in diagnosing disease by connecting directly to your computer
- Plug and Diag: so easy to use

**Cutting - edge technology**

- Anti-moiré filter for flexible applications.
- Automatic video settings
- Waterproof



**VETscope**

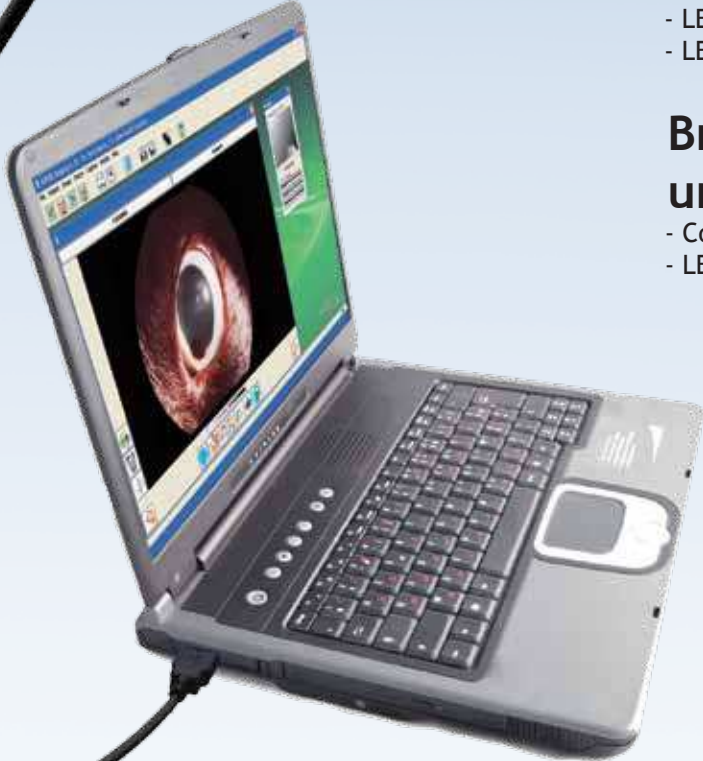


**User-Friendly**

- The CS-mount Vetscope 0° can be attached to the Ubicam or any CS-mount camera.
- Depth of field : 1 to 7 cm
- Working channel

**Multipurpose**

- Use to examine your pet, to better diagnose ear infections or blockages
- Use to pinpoint dental or throat conditions as well as identify rectal or genital urinary tract problems that might not otherwise be seen



**Powerful, ultra efficient and compact**

- LED consulting room light source
- LED technology for extended product life and reduced emitted heat

**Bright and uniform illumination under all conditions with minimal shading**

- Color temperature close to daylight for the best color contrast
- LED technology emits no ultraviolet (UV) rays or infrared (IR) radiation

**UBIPACK VET**

**The perfect combination to fit your needs in daily practice**

- Portable - it will follow you in your different exam rooms
- Smart design of the whole package

- Ubicam 1/3" CCD, CS-mount, USB camera
- A Vetscope 0°, CS-mount
- Ubiled, LED light source with its cable (storz connectors included)
- Three flexible instruments
- Sopro Imaging Veterinary Software
- One sensor holder
- Delivered in its dedicated suitcase

- 134° Autoclavable
- High quality fiberoptic illumination incorporated
- 5Fr. working channel
- Distal and proximal shapphire window

- All you need in one pack for your daily practice
- User Friendly: This will rapidly so exam results to the pets owner
- Versatile and Compact: Ubipack is adapted to your needs and your surroundings