



Powerful, ultra efficient and compact

- LED consulting room light source
- LED technology for extended product life and reduced emitted heat

Bright and uniform illumination under all conditions with minimal shading

- Color temperature close to daylight for the best color contrast
- LED technology emits no ultraviolet (UV) rays or infrared (IR) radiation

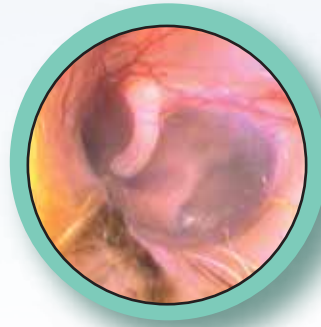
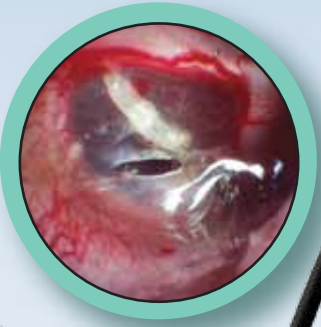
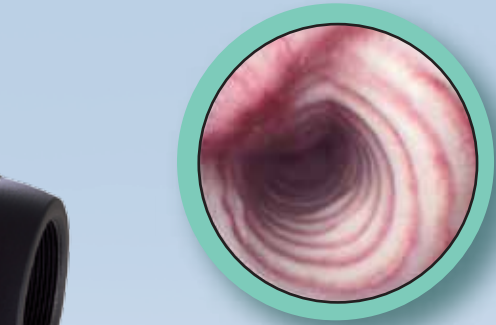


Smart and User-Friendly

- All-In-One USB2 camera aids in diagnosing disease by connecting directly to your computer
- Plug and Diag: so easy to use

Cutting - edge technology

- Anti-moiré filter for flexible applications.
- Automatic video settings
- Waterproof



VETscope



User-Friendly

- The CS-mount Vetscope 0° can be attached to the Ubicam or any CS-mount camera.
- Depth of field : 1 to 7 cm
- Working channel

Multipurpose

- Use to examine your pet, to better diagnose ear infections or blockages
- Use to pinpoint dental or throat conditions as well as identify rectal or genital urinary tract problems that might not otherwise be seen

UBIPACK VET

The perfect combination to fit your needs in daily practice

- Portable - it will follow you in your different exam rooms
- Smart design of the whole package

- Ubicam 1/3" CCD, CS-mount, USB camera
- A Vetscope 0°, CS-mount
- UBiled, LED light source with its cable (storz connectors included)
- Three flexible instruments
- Sopro Imaging Veterinary Software
- One sensor holder
- Delivered in its dedicated suitcase

- 134° Autoclavable
- High quality fiberoptic illumination incorporated
- 5Fr. working channel
- Distal and proximal shapphire window

- All you need in one pack for your daily practice
- User Friendly: This will rapidly so exam results to the pets owner
- Versatile and Compact: Ubipack is adapted to your needs and your surroundings